



Studio+ Design Brochure

Custom design options to help you
build a home you will truly
adore.



Styles, Options, and Upgrades

Tough on the outside and stylish on the inside, each Luckdrops Studio+ is designed to meet your unique needs. The living room, kitchen, bedroom, and bathroom are all designed with you in mind. Whether you're raising a family or want a cozy getaway pad, the space is completely yours.

From rustic wood grain to Sunny Yellow vinyl flooring, personalize your Luckdrops Studio+ with our extensive range of flooring finishes, shades, interior and exterior paints, tile options, and much more. You can even upgrade your space to include additional security features, amenities, and more.

**“Every wall and piece of steel in
your new home represents the
struggle and hard work it took to
become a homeowner.
Congratulations, enjoy the fruits
of your labor.”**

Steven R. James
(Product Design Manager)



Primary Design Components

Studio+ Modular Home

Exterior Paint

All of our exterior paint products are premium two component chemically curing aliphatic acrylic polyurethane. Our coatings are designed to protect your home from natural weathering and relieve you of maintenance worries. Our products fight color fading caused by the elements and delivers outstanding durability with a consistent, vibrant color profile.



Studio+ Modular Home

Exterior Paint Features & Benefits

Superior UV Protection

Made with premium components, our paint lasts 2x longer than other exterior paints to ensure your home stays beautiful longer with lasting colors.

Anti Watermark

Protects your home from visible watermarks and keeps it looking fresh and beautiful.

Anti Algae & Anti Fungal

Long lasting protection against fungus and algae in tropical climates.

Temperature Reducing

Paint reflects sunlight thereby reducing surface temperatures and keeping your home nice and cool.

Color Performance

Certified by external lab to provide 8 years of lasting colors to protect your home.

Dirt Resistance

Paint film resists dirt pick up from the environment and is easily washed off by the rain.



Vanilla



Old Lace



Dazzle Light



Timeless



Twilight



Navajo White



Sweet Nectar



Yellow Stone



Golden Lily



Yellow River



Nura



Smooth Ivory



Blush Pink



Coco Berry



Fire Brick



Flax



Red Ocean



Brick Red



Star Violet



Thunder



Thunder Hero



Blue Marine



Khaki



Cypress



Library Seat



Tree



Rompin



Green Spring



Oolong



Tea Leaves



Fresh Concrete



Thyme



Space Grey



Evening Stone



Rich Kashmir



Tar



Studio+ Modular Home

Interior Paint

All of our interior paint options are premium, long lasting water-based acrylic paints that deliver rich beautiful colors and a perfectly smooth and flawless finish. TrueColor Technology is a unique formulation of quality materials that ensure accurate, consistent and long lasting colors. All of our paints have been tested and proven to have the least harmful emissions with the lowest odor possible.

Studio+ Modular Home

Interior Paint Features & Benefits

Healthy Home

Tested to have the least harmful emissions and lowest odor profile on the market.

Healthy & Eco-smart

Free from harmful chemicals such as APEO, formaldehyde, and heavy metals. Paints have very low volatile organic compound emission ratings (VOC).

Anti-Bacterial & Fungal

Effectively inhibits the growth and spread of 12 types of common household microorganisms.

Rich Beautiful Colors

Delivers rich color hues, giving your home a vibrant beauty that truly lasts.

Stain Resistant

Contains superior stain-resistant properties to maintain its rich colors and lustre after repeated cleaning.

Crack Resistant

Covers hairline cracks perfectly with a perfectly smooth and luxurious finish.



Decorator's White



Simply White



Timid White



China White



Artist Clay



Silky Pink



Dusty Rose



Red Maple



Nordic Breeze



Icy Blue



Industrial Blue



Tender Green



Soft Teal



Evening Green



Dark Teal



Timeless



Elegant



Pebblestone



Objective



Bare



Organic Green



Green Tea



Laurel



Pale Linden



Norwegian Wood



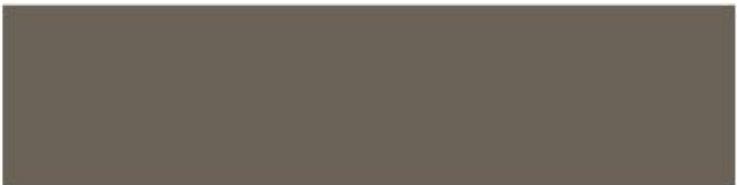
Savanna Sunset



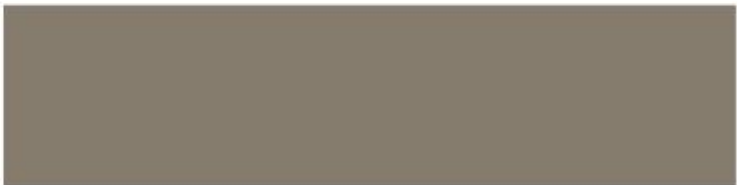
Blushing Peach



Soft Skin



Smoked Oak



Hipster Brown



Almond Beige



Space



Raw Canvas



Sandy



Golden Bronze



Studio+ Modular Home

Drywall

All of our drywall products consist of aerated gypsum core plasterboard. Various health and eco-friendly additives are infused into the gypsum core to bring about desirable qualities such as moisture, fire, and impact resistance.

Studio+ Modular Home

Standard Board Features & Benefits

Safe & Eco-friendly

Features all the sustainability and recyclability benefits of standard plasterboard without producing toxic fumes or hazardous substances that are harmful to health.

Thermal Insulation

Low thermal conductivity means better insulation against temperature fluctuations.

Fire Protection Rating

Adheres to one of the highest fire-rating standards for Gypsum board possible (Class 2/ Class B).

Sound insulation

Great at cutting down unwanted sounds and noises with sound insulation ranging from 42 dB - 55dB.

Studio+ Modular Home

Habito Board Features & Benefits

Impact Resistance

Tougher and stronger than standard plasterboards. Can withstand severe impact forces, saving you the cost of maintenance and future repairs.

Excellent Noise Barrier

Great at cutting down unwanted sounds and noises with sound Insulation ranging from 46 dB - 55dB.

Thermal Insulation

Extremely low thermal conductivity means better insulation against temperature fluctuations.

High Load Capacity

Superior Load Bearing allows for 44 lbs per screw, meaning that hanging appliances and redecorating can be safely done without studs or other supports.

Maximum Fire protection

Adheres to one of the highest fire-rating standards for Gypsum board possible (Class 1/ Class A).

Safe & Eco-friendly

Features all the sustainability and recyclability benefits of standard plasterboard without producing toxic fumes or hazardous substances that are harmful to health.



Standard Board

Standard Drywall **+\$0**



Habito Board

Upgraded Drywall **+\$1,500**

Studio+ Modular Home

Vinyl Flooring

Pair the natural, warm look of wood with the durability of vinyl to create stylish floors for your home. This scratch- and stain-resistant flooring locks right into place.



Studio+ Modular Home

Vinyl Flooring Features & Benefits

Extremely Durable

Vinyl does not scratch easily, chip or suffer any kind of major damage to its appearance.

Moisture Resistant

Can be installed anywhere in the house like bathroom and kitchen.

Easy to Maintain

Only needs vacuuming or sweeping and washing with soap and water to keep the floor clean.

Soft Underfoot

Softer underfoot as it has more give due to a layer of foam or felt backing. This makes it more comfortable to stand on.

Environmentally Safe

Vinyl floors are made of 100% environmentally friendly products.

Warm & Comfortable

Able to stay at room temperature and will keep you warm in winter.



Barrel Wood
Light S471



Sterling Oak
S474



Essential Oak
S477



Summer Oak
S470



Cider Oak
S472



Shadow Hickory
S473



Sapelli Red
S476



Noble Oak
S475



SPC A158



SPC A155



SPC A152



SPC A150

Vinyl Flooring

Standard Colors **+\$0**



SPC A147



SPC A146



SPC A140



SPC A139



SPC A137



SPC A135



SPC A134



SPC A123



Ashton
LRX9321



Snowdrift
LRX9362



Windsor
LRX3651



Hampton
LRX8146

Vinyl Flooring

Upgraded Colors

+\$500



Mirage
LRX0827



Vivo
LHD2826



White House
LHD2839



Oakville
LHD2841

Vinyl Flooring

Upgraded Colors

+\$500



Havana
LHD3168



Starlite
LHD2842



Valencia
LCX2825

Vinyl Flooring

Upgraded Colors **+\$500**



Studio+ Modular Home

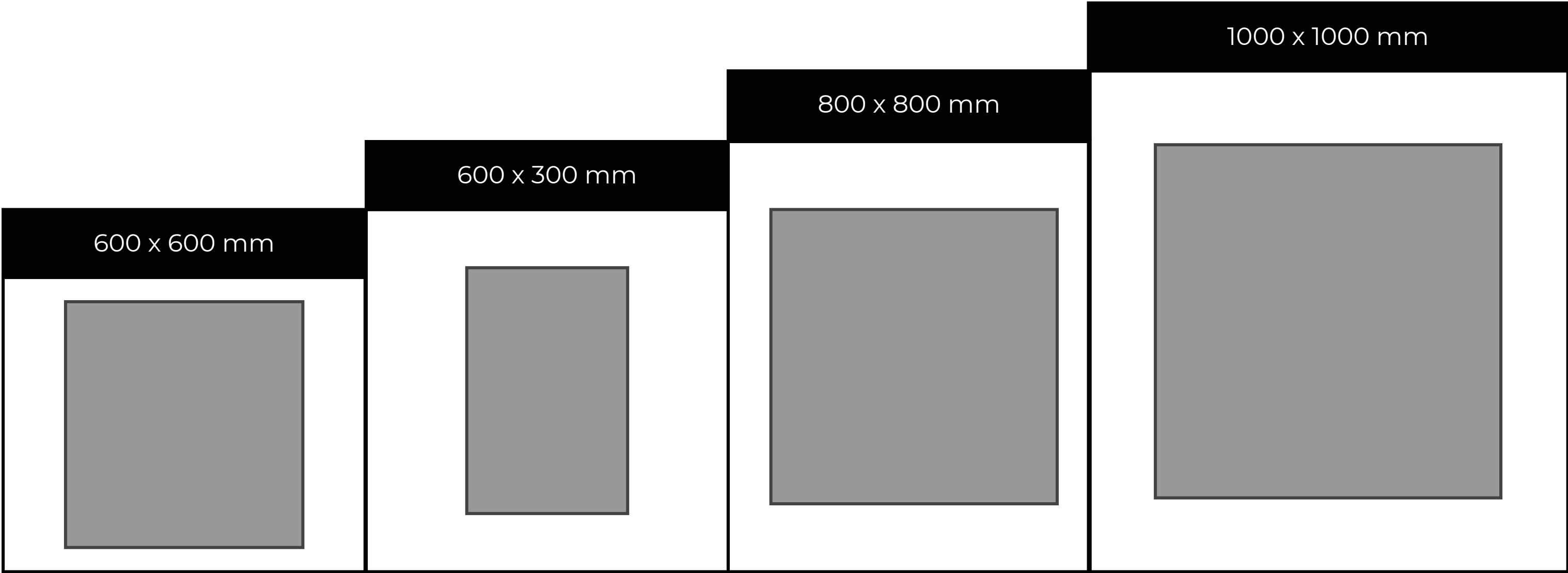
Bathroom Tiles & Backsplash

Whether your style is traditional or contemporary, modern or retro, these versatile tiles are impervious to water and come in an array of colors, styles and textures. Using the right combination of pattern, finish and color selection, you can make smaller spaces appear larger and turn spacious areas into soothing sanctuaries.

Studio+ Modular Home

Tile Sizing Chart

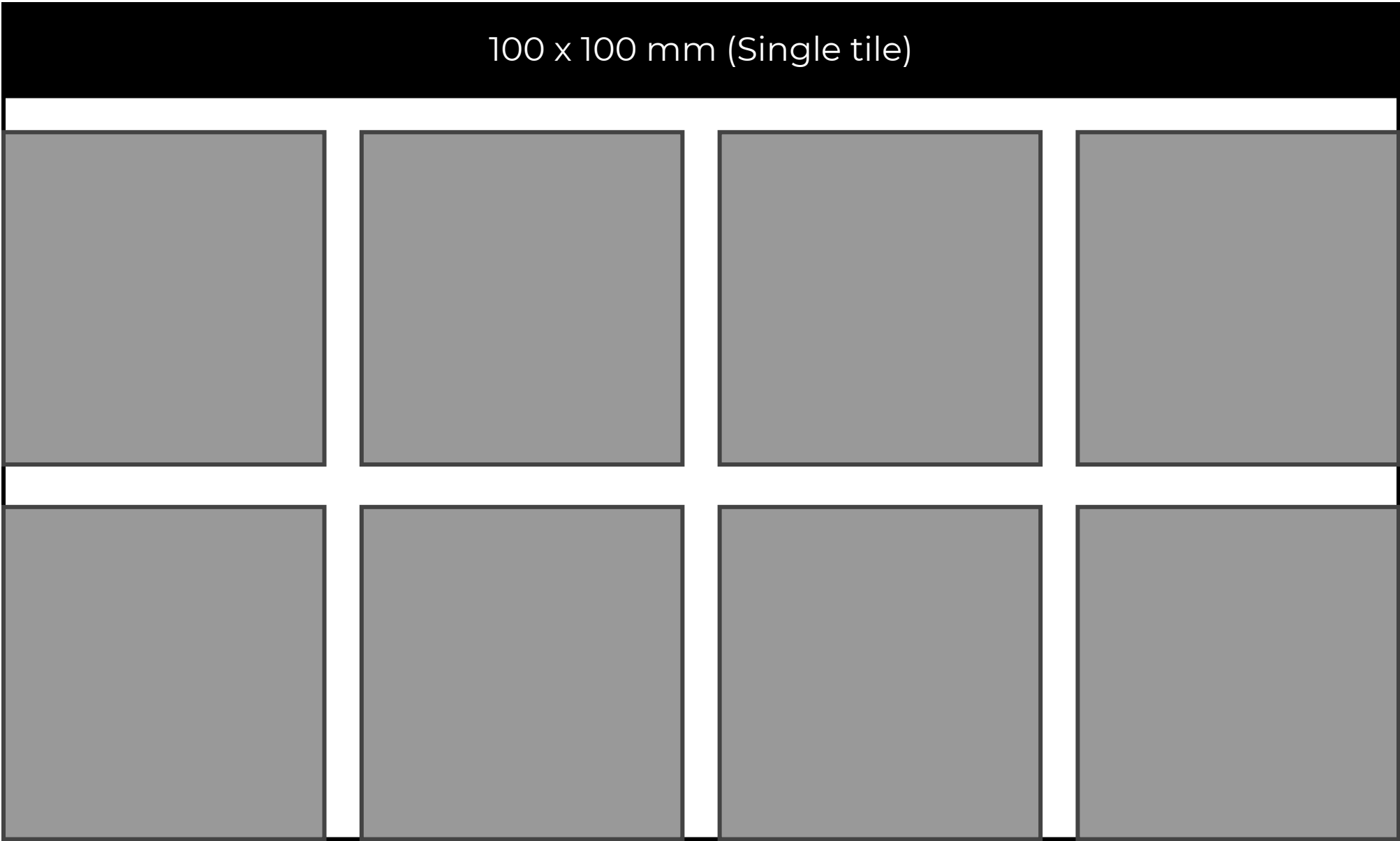
Choosing the right size tile can have a dramatic impact on the look and feel of your home. Generally, we recommend smaller to mid-sized tiles to increase the perceived size of your spaces.



Studio+ Modular Home

Backsplash Tile Sizing Chart

A tile backsplash serves the dual purpose of both accentuating the design of your kitchen as well as protecting your walls from moisture intrusion and water damage. Choose one our our backsplash design for the protection and to make your unique design statement.



Studio+ Modular Home

Ceramic Tile Features & Benefits

Water Resistant

Ceramic and Porcelain tiles are resistant to the ravages of high humidity conditions.

Durability

Ceramic tiles are extremely tough, and are difficult to crack.

Allergen Reducing

Ceramic tile does not attract dust and dust mites which reduces the amount of household allergens.

Environmentally Friendly

Ceramic tiles are made from clay, sand and glass. Many ceramic tiles are made from recycled and/or recyclable content.

Low maintenance

Ceramic tiles are easy to maintain, from simple cleaning to optional sealing over time.

Easy to Clean

Dirt, stains, and liquids all rest on the surface of ceramic tiles, allowing you to easily wipe or mop them away.



G68525600x600mm

G63525600x300mm

G38525300x300mm



G68548600x600mm

G63548600x300mm

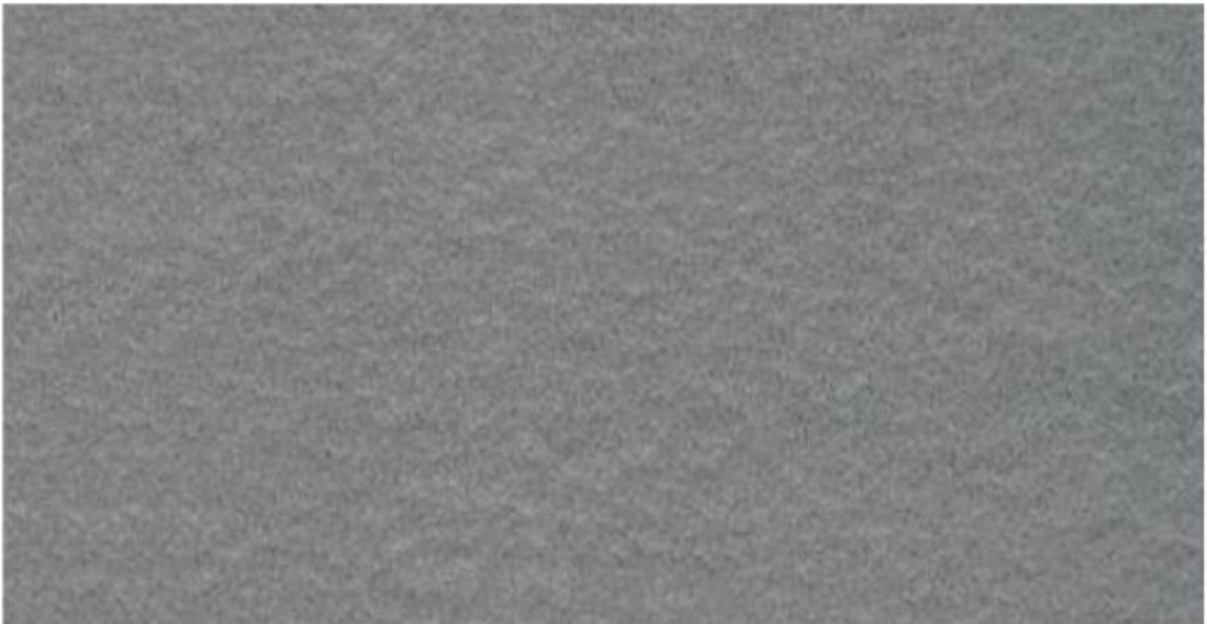
G38548300x300mm



G68522600x600mm

G63522600x300mm

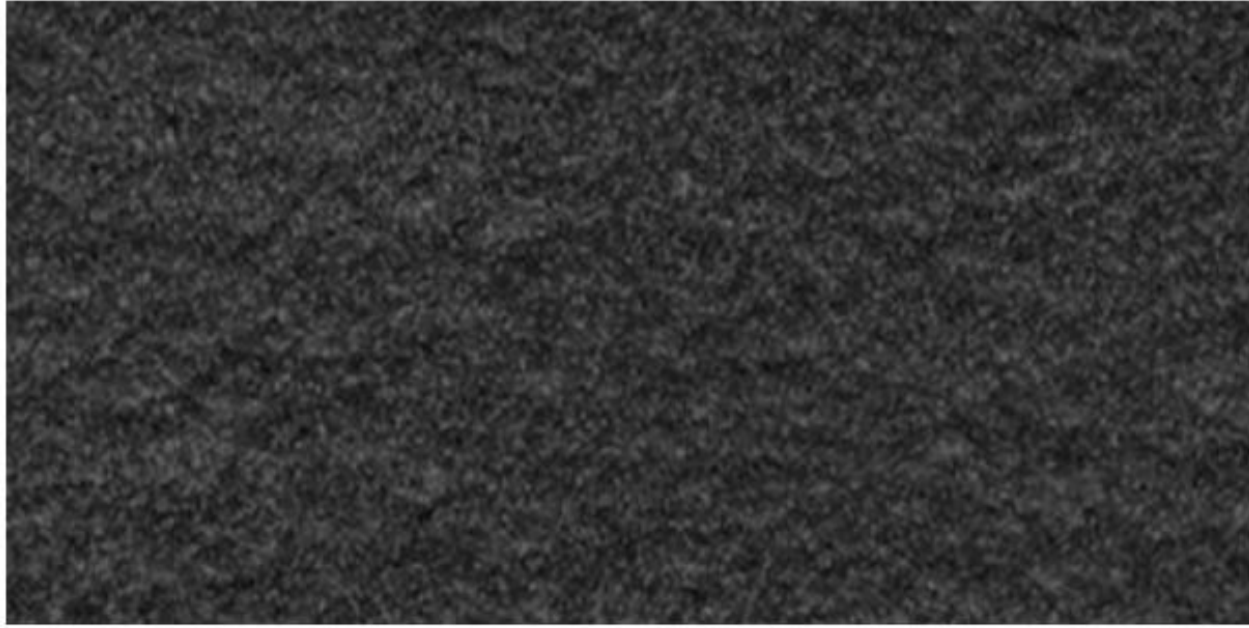
G38522300x300mm



G68528600x600mm

G63528600x300mm

G38528300x300mm



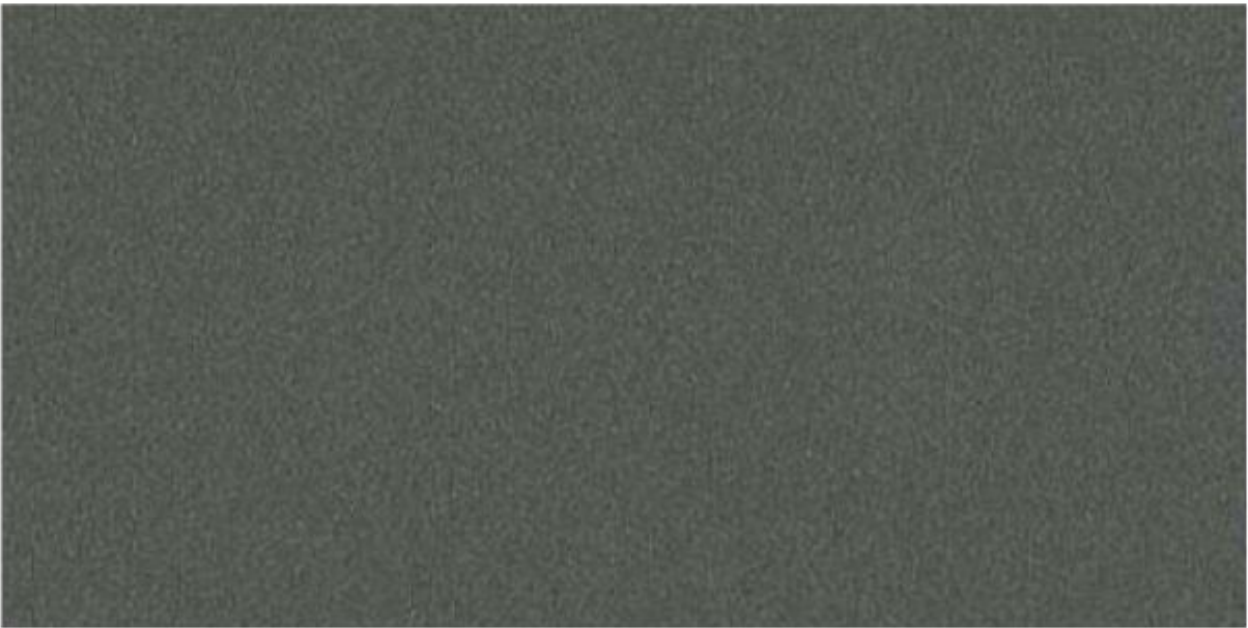
G68529 600x600mm
G63529 600x300mm
G38529 300x300mm



G68025 600x600mm
G63025 600x300mm
G38025 300x300mm



G68028 600x600mm
G63028 600x300mm
G38028 300x300mm



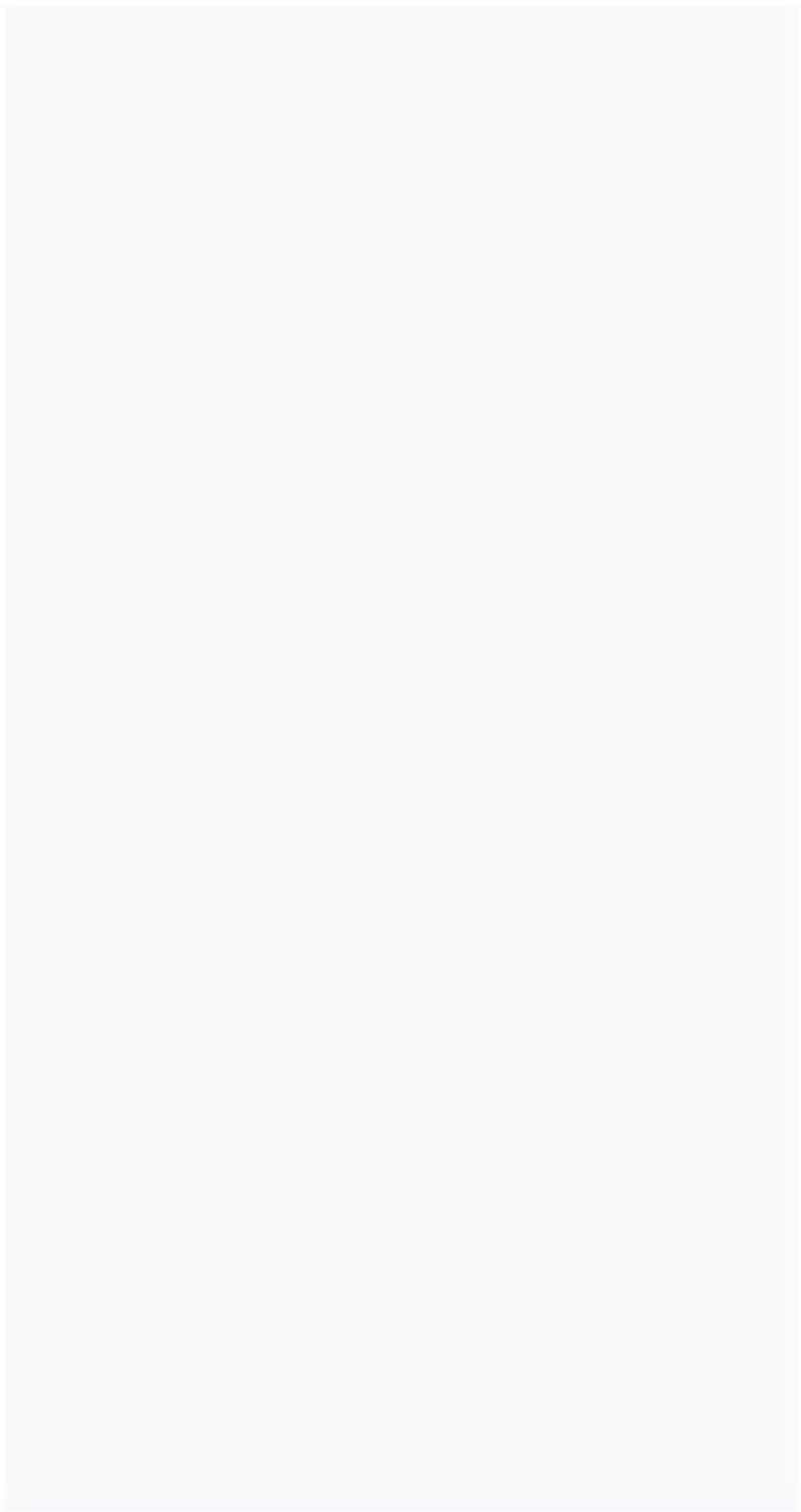
G68029 600x600mm
G63029 600x300mm
G38029 300x300mm



GP68085 600x600mm
GP68085 600x300mm



GP68945. 600x600mm
GP68945 600x300mm



GP68035 600x600mm
GP68035 600x300mm

Studio+ Modular Home

Granite Tile Features & Benefits

Flexibility

Granite tiles are extremely flexible and can be used on both floors and walls.

Durability

Granite is a hard stone that is virtually impossible to break. With proper care, granite will last a lifetime.

Hypoallergenic

Granite is resistant to bacteria and allergens and is suitable for people with asthma and allergies.

Moisture Resistant

Granite is a non-porous material and is incredibly water and moisture resistant.

Strong

Scratch and stain resistant which means it is great for bathroom and kitchen.

Easy to Clean

Granite tiles are incredibly easy to clean and maintain within the home, making them perfect for using within the kitchen and bathroom.



GP68845 600x600mm
GP68845 600x300mm



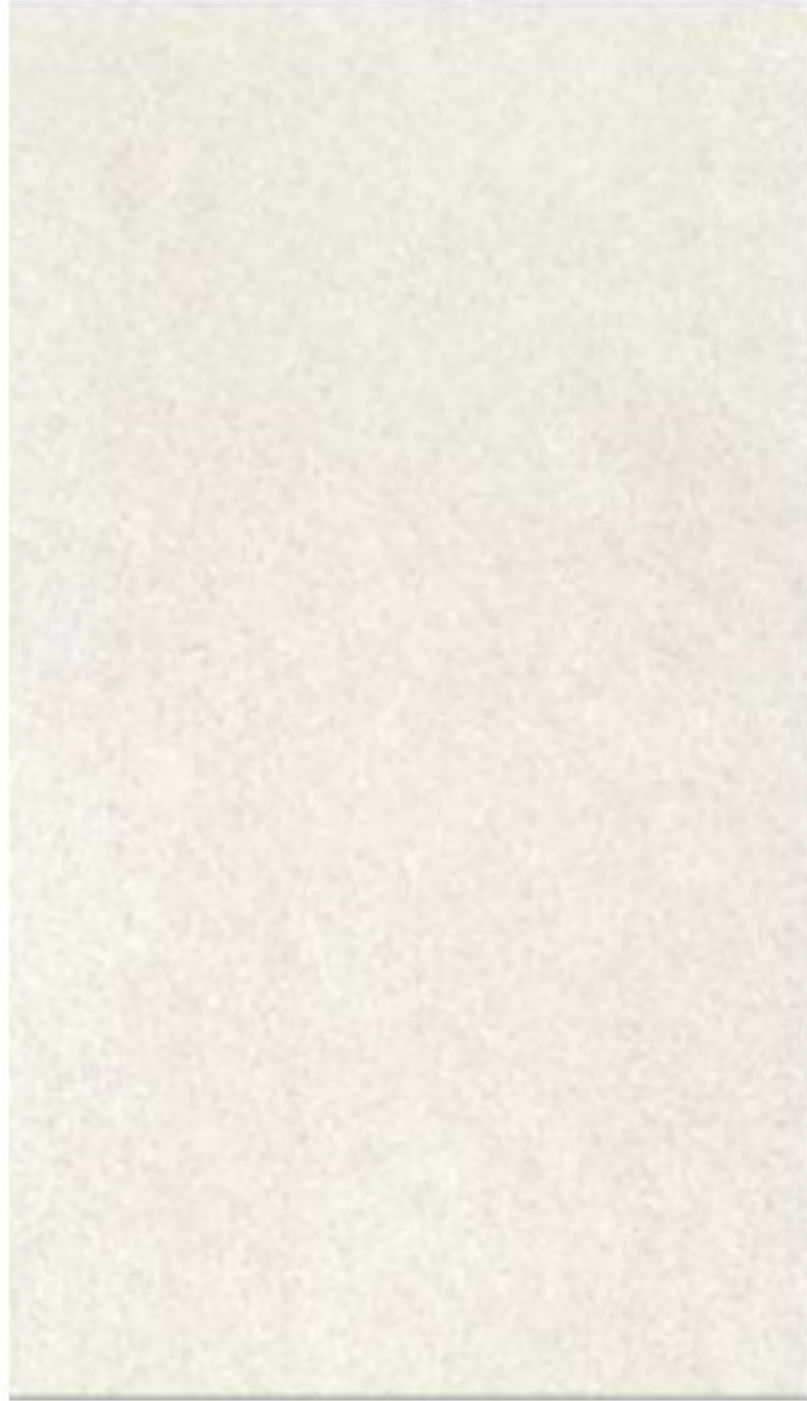
GP68848 600x600mm
GP68848 600x300mm



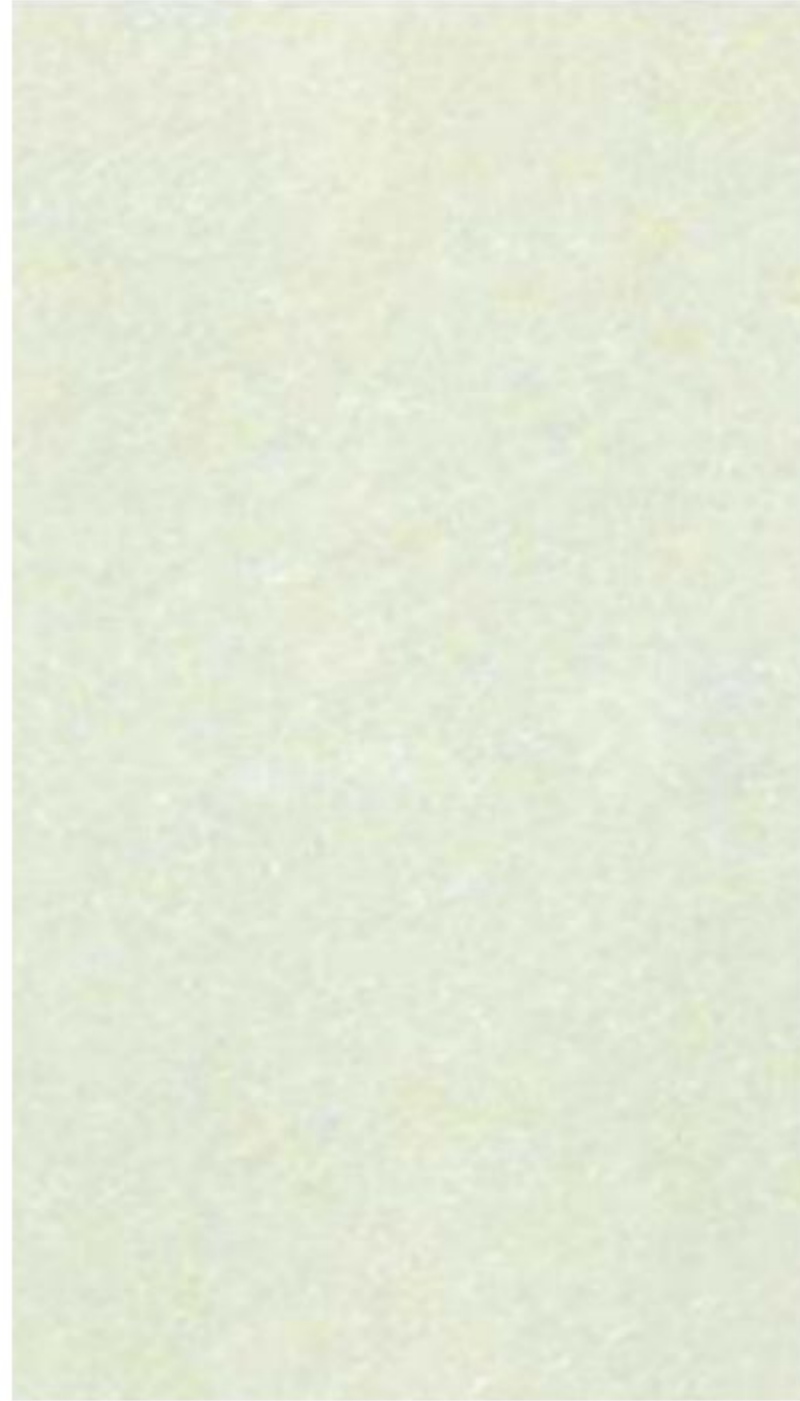
GP68849 600x600mm
GP68849 600x300mm

Natural Granite

Standard Colors **+\$0**



P10702N	1000x1000mm
P87702N	800x800mm
P67702N	600x600mm
PC600x298-702	600x300mm



P87703N	800x800mm
P67703N	600x600mm
PC600x298-703N	600x300mm



P87418N	800x800mm
P87418N	600x600mm

Polished Granite Tile

Upgraded Colors **+\$100**



THD 02. 600x300mm



THD 03. 600x300mm



THD 04. 600x300mm

Matt Granite Tile

Upgraded Colors **+\$300**



ANN G01

600x300mm



ANN G02

600x300mm



ANN G03

600x300mm



ANN G04

600x300mm

Matt Granite Tile

Upgraded Colors **+\$300**



DAS D01

900x300mm



DAS D02

900x300mm



ANN G03

600x300mm



ANN G04

600x300mm

Matt Granite Tile

Upgraded Colors **+\$300**



HOD G01

600x300mm



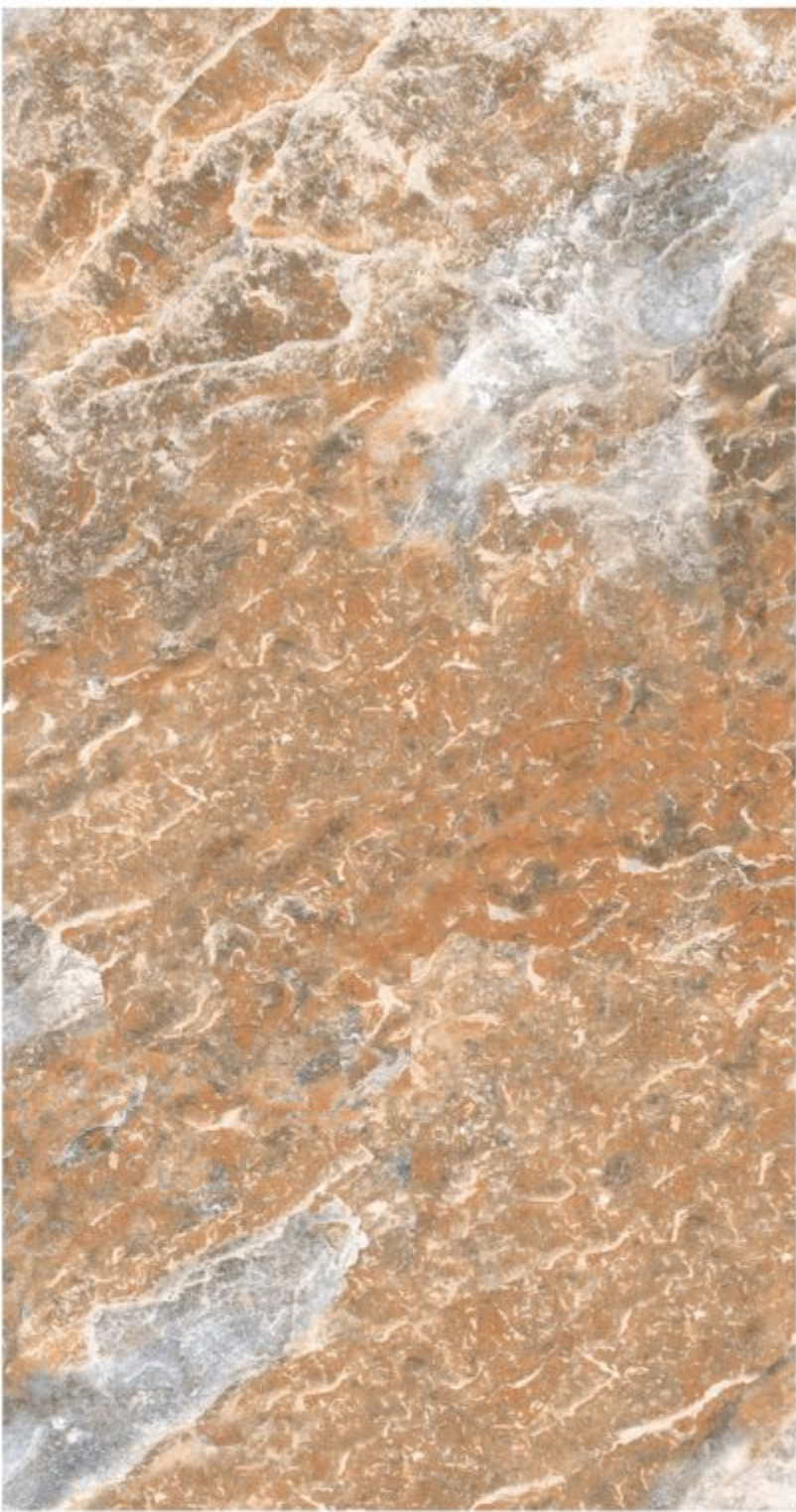
HOD G02.

600x300mm



HOD G03

600x300mm



HOD G04

600x300mm

Matt Granite Tile

Upgraded Colors **+\$300**



LUS G01

600x300mm



LUS G02.

600x300mm



LUS G03

600x300mm



LUS G04

600x300mm

Matt Granite Tile

Upgraded Colors **+\$300**



PHS G01

600x300mm



PHS G02.

600x300mm



PHS G04

600x300mm



PHS I03

600x300mm

Matt Granite Tile

Upgraded Colors

+\$300



MOC D01

900x300mm



MOC D02

900x300mm



MOC D03

900x300mm



MOC D04

900x300mm

Matt Granite Tile

Upgraded Colors **+\$400**



MOL I01 900x150mm



MOL I02 900x150mm



MOL I04 900x150mm



MOL I05 900x150mm

Matt Granite Tile

Upgraded Colors **+\$400**

Studio+ Modular Home

Cabinets

Our Stylish, high-quality Medium Density Fiberboard (MDF) cabinets are available in colors to match your interior design. Get a unique style for your unique vision.



Studio+ Modular Home

Medium Density Fiberboard(MDF) Features & Benefits

Smooth Surfaces

MDF is a solid, dense, flat, and stiff engineered wood without knots or kinks to disturb its smooth surface.

Bug Resistant

Resistant to some insects as some chemicals are used for the processing of MDF.

Cost Effective

Economic value allows money to be spent on look and property additions as it is inexpensive to purchase and process..

Highly Customizable

Very easy to color, cut and drill without taking damage. Achieving a realistic look by attaching real wood veneers, laminators, etc is very easy.

Eco-Friendly

Saves trees as it is a recycling process. Excellent machining character also reduces waste of production resources.

Long Shelf Life

Consistent strength and life-span throughout construction, as opposed to natural wood.



Sink Base

Features a durable white matte finish and chrome hardware. Clean lines and concealed hinges. The 2-door construction gives you plenty of storage.

Wall Cabinet

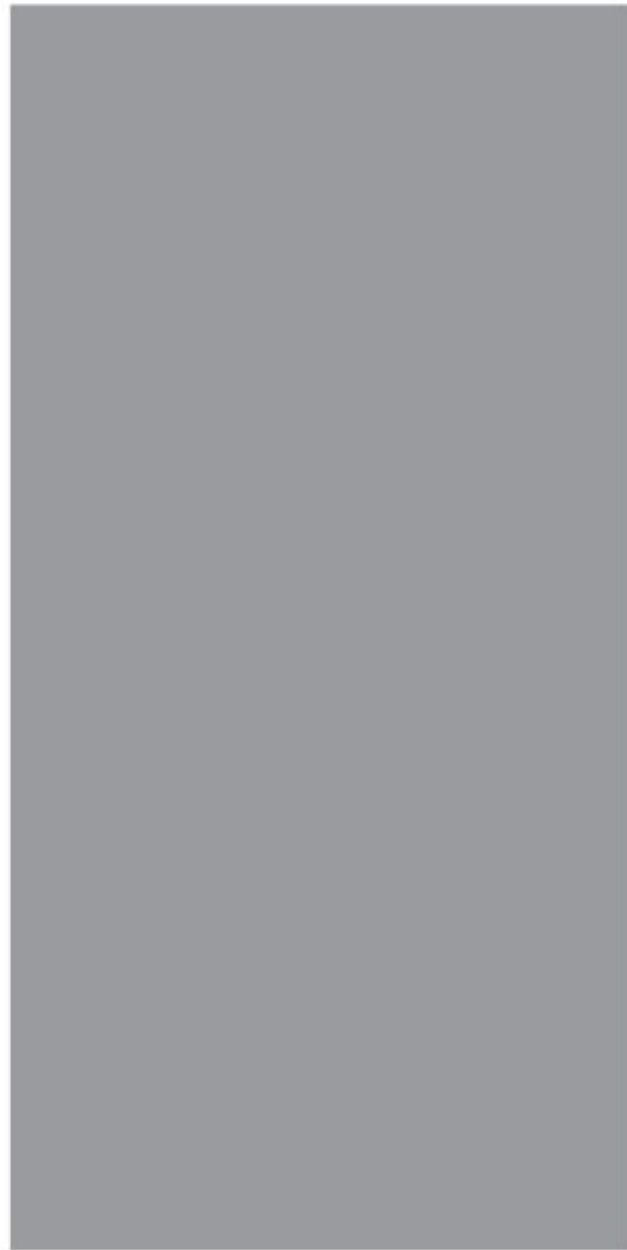
High quality cabinet features seamless construction, a smooth finish, and has color consistency throughout as well as being very easy to maintain and clean.

Drawer Pullouts

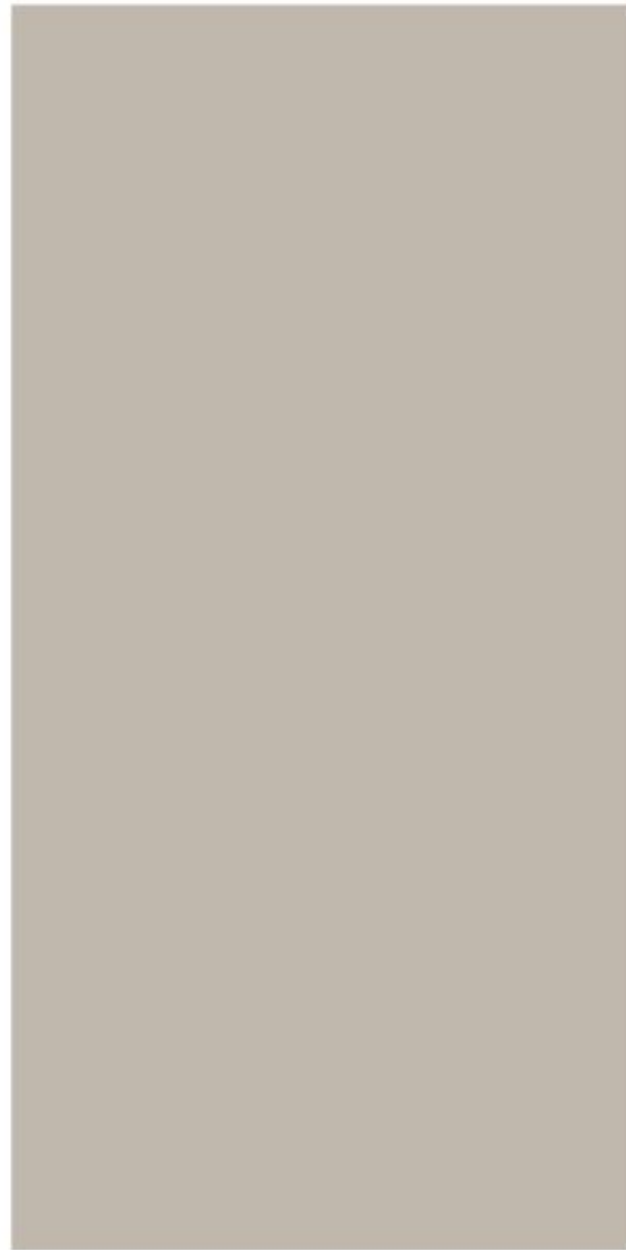
Smooth-running, full-extension drawers with high quality matte finish and mechanism to ensure it closes slowly, softly, and quietly.

Built-in Open Wall

Sturdy MDF framed wall cabinet with matte finish and concealed hinges. Plenty of storage space with adjustable shelving position to optimize for stored content.



Plummett Grey
#272



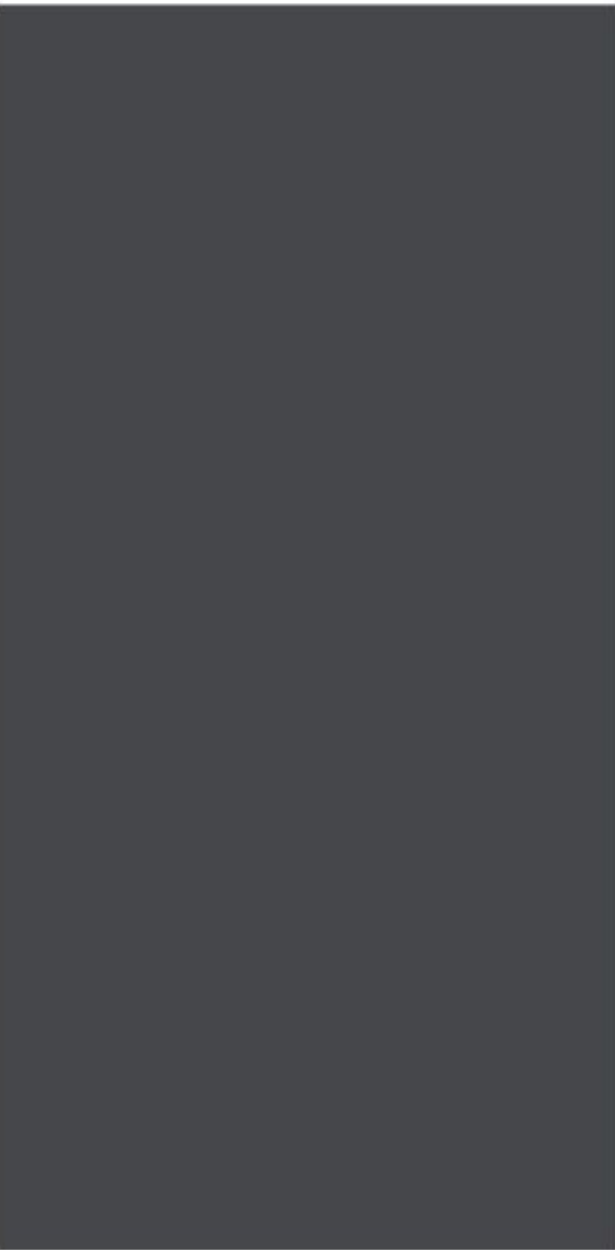
Pavillion Grey
#242



Studio Green
#93



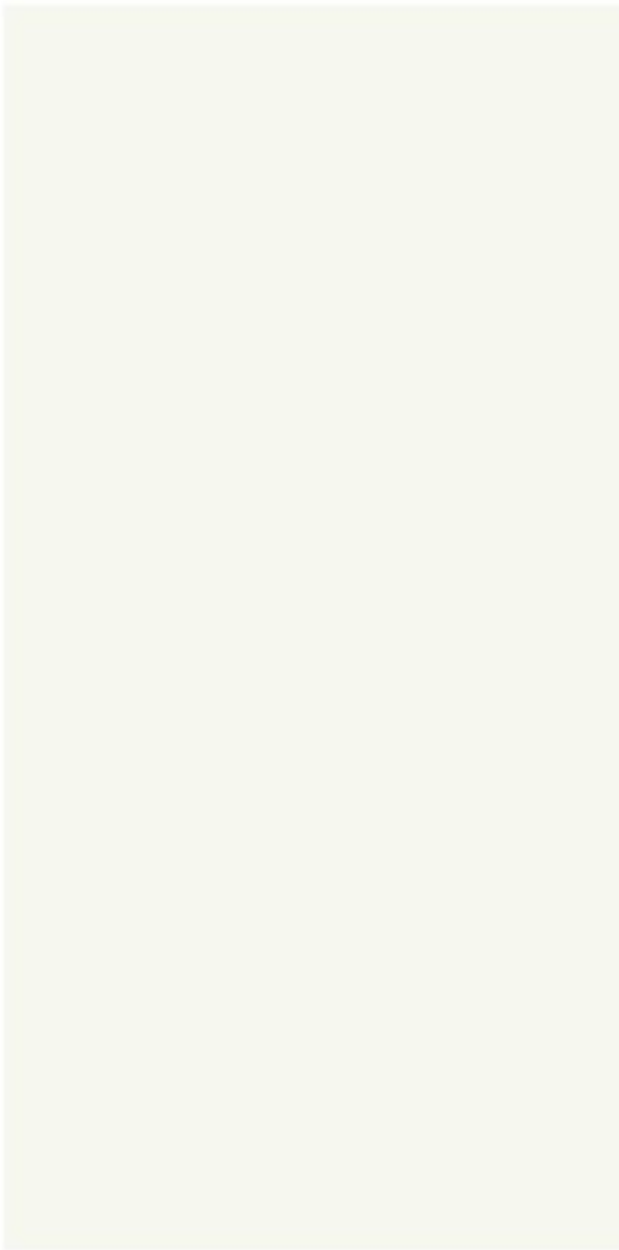
Avacado
#2145-10



Raccoon Fur
#2126-20



Pebble
#33-29



Simply White
#2143-70



Pelt
#254



Studio+ Modular Home

Granite Countertop

Our granite has been a million years in the making. Since it's a natural stone, it can withstand heat and scratches from day-to-day use. When properly sealed, it's stain- and bacteria-resistant, making it the perfect surface for food prep.

Studio+ Modular Home

Granite Countertop Features & Benefits

Classic Curb Appeal

People are attracted to the classic style of granite countertops. Not just because of the granite, but because it's saying something about the entire house.

Super Sanitary

Granite is smooth and non-porous, meaning liquids will not soak into it, dirt, bacteria, and other grime will not stick, and clean up is easy.

Eco-Friendly

Granite is literally formed by Mother Nature, cut out of the ground in big blocks, sawn into slabs, and then polished to a shiny surface. It doesn't get more natural than that.

Long-lasting Durability

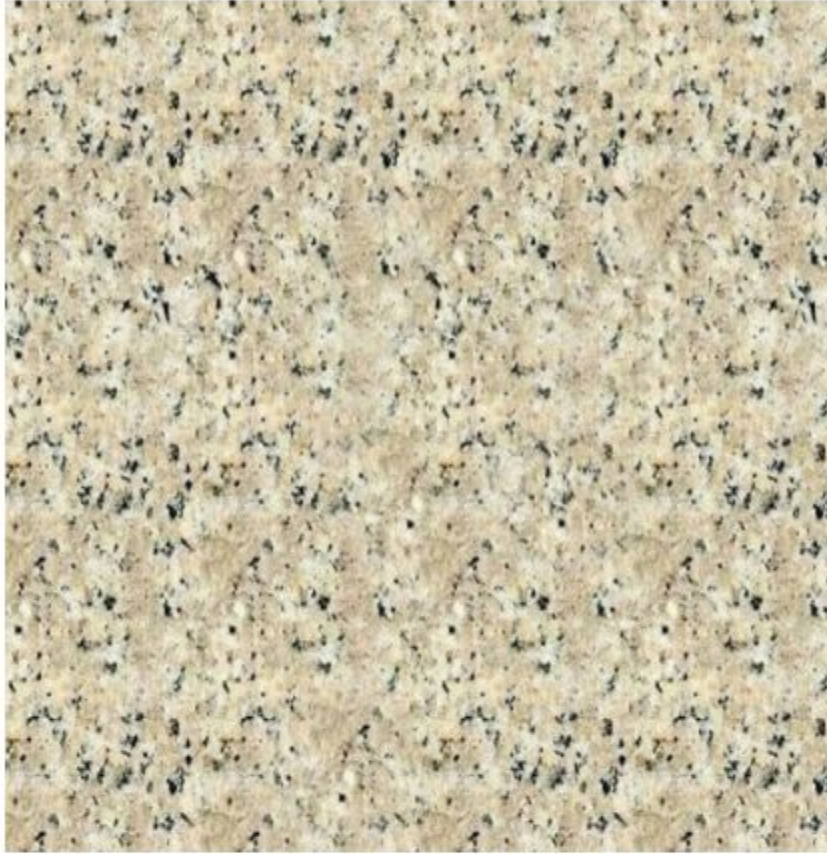
Granite is one of the toughest stone-based countertops, which means you would have a hard time scratching or chipping the surface of the stone. Also doesn't Sun-fade.

Heat Resistant

Being resistance to heat and cold, you will find it fun and comfortable to cook. You can put hot pots and pans on top of it, and it will be just fine.

Easy to Fix

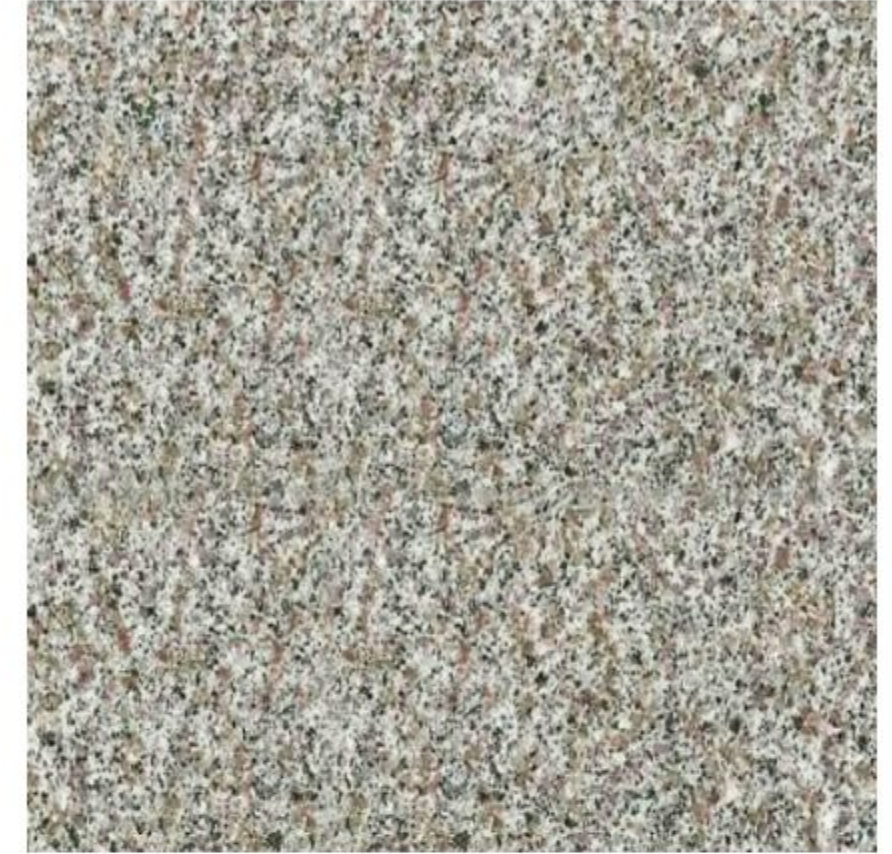
Chips and damage to stone countertops are notoriously hard to repair, but granite is fairly easy to fix and you can easily do it yourself.



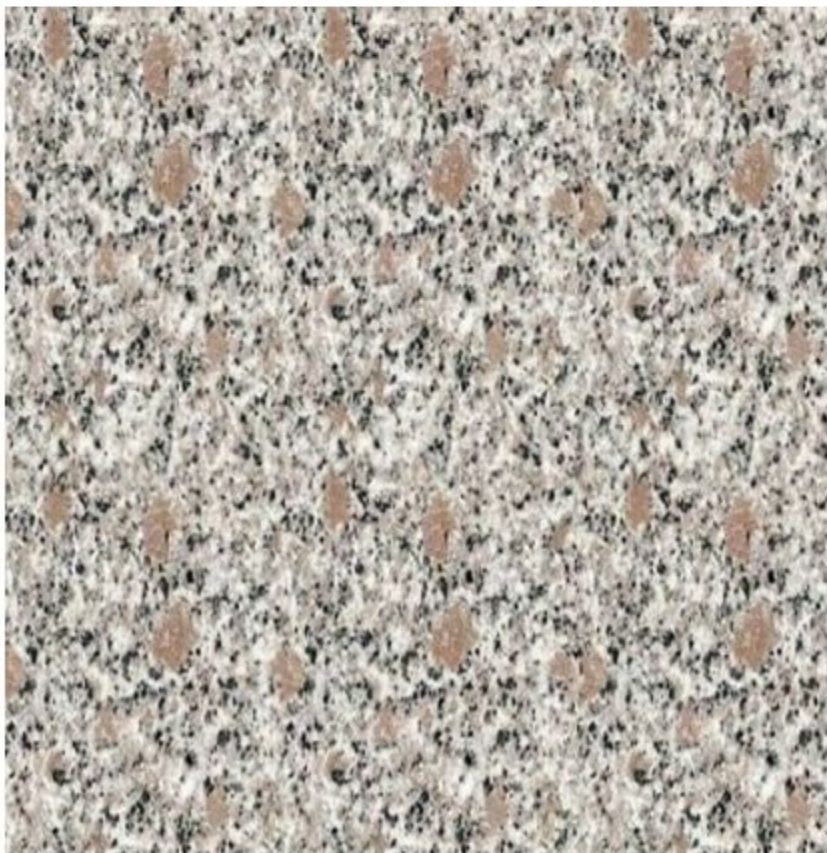
PH Grey Stone



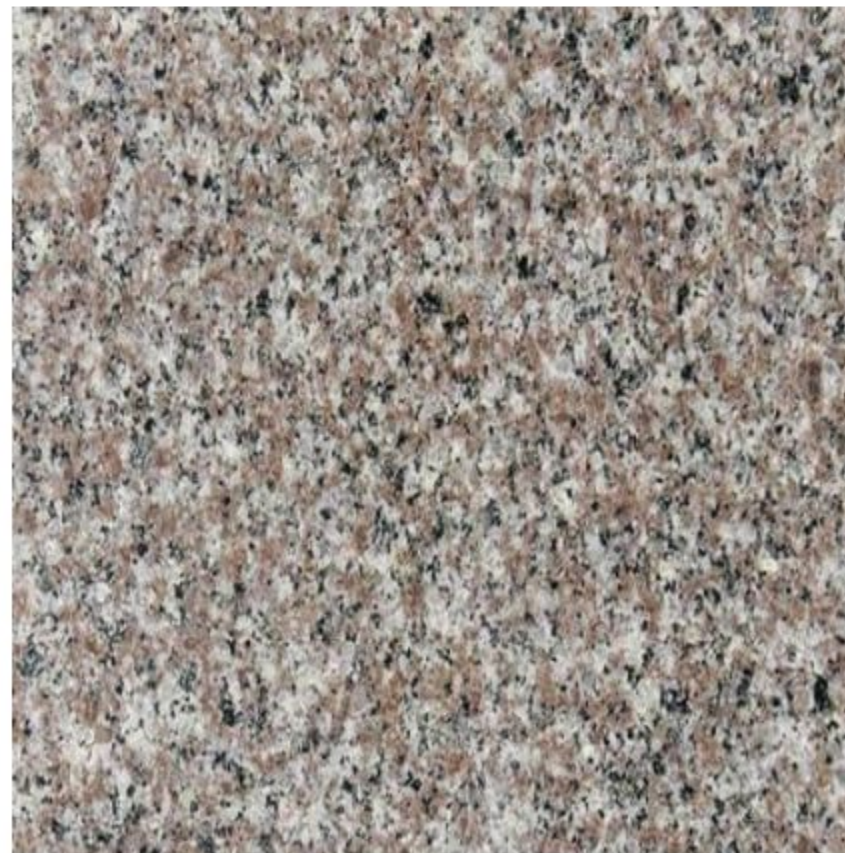
BD Yellow Granite



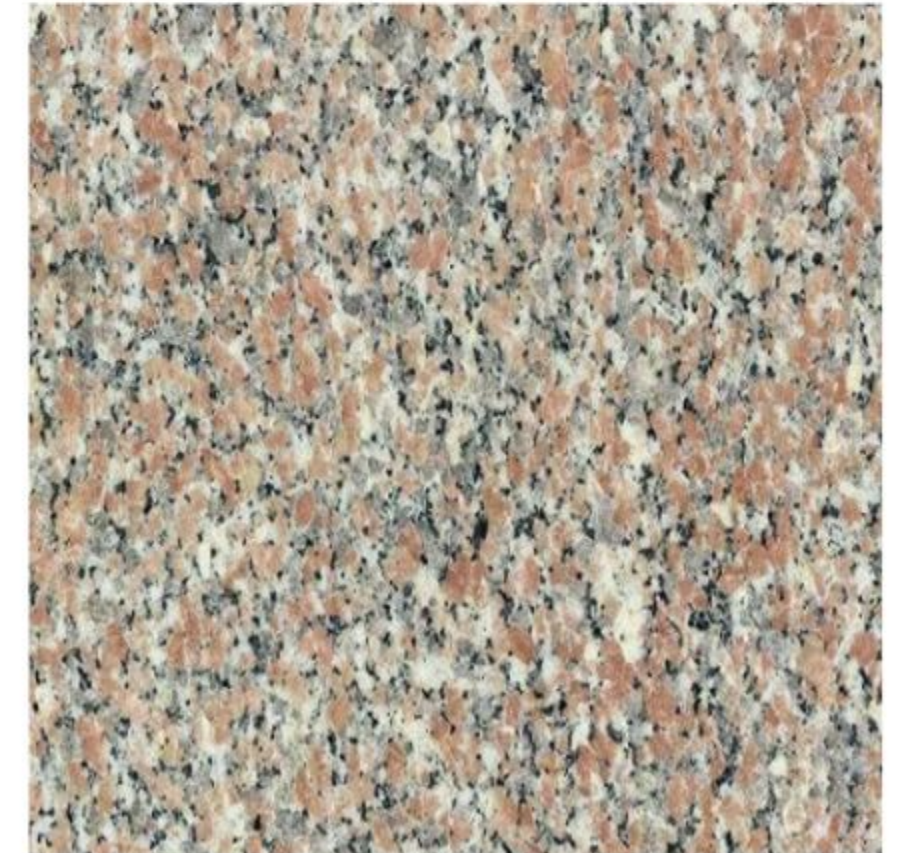
KH Purple Granite



Chamomile Purple Granite



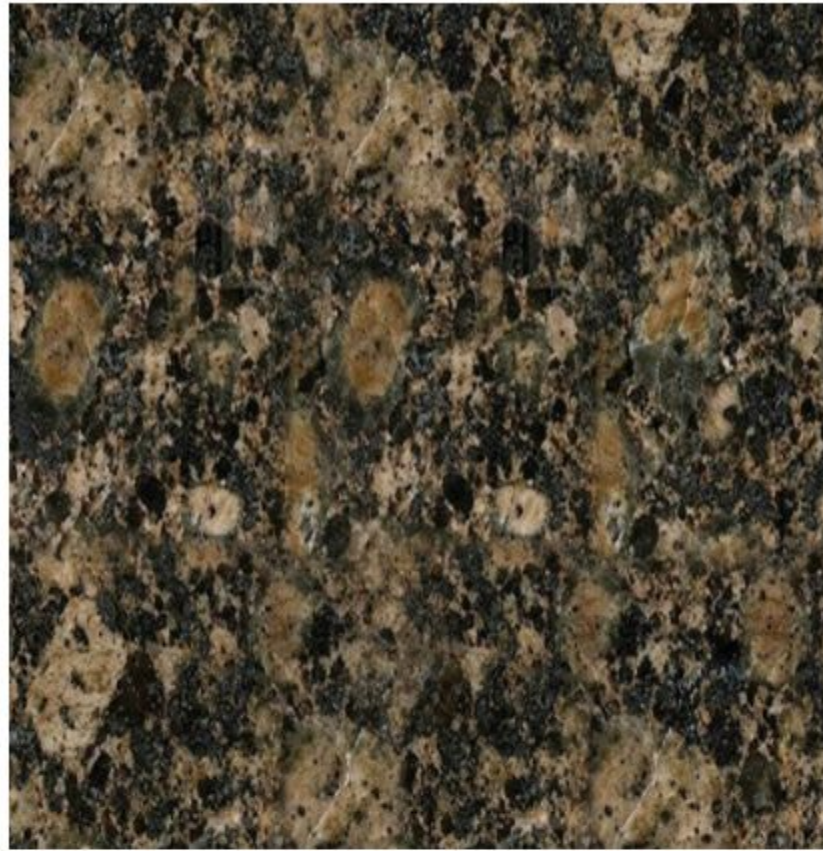
Purple Mongolian Granite



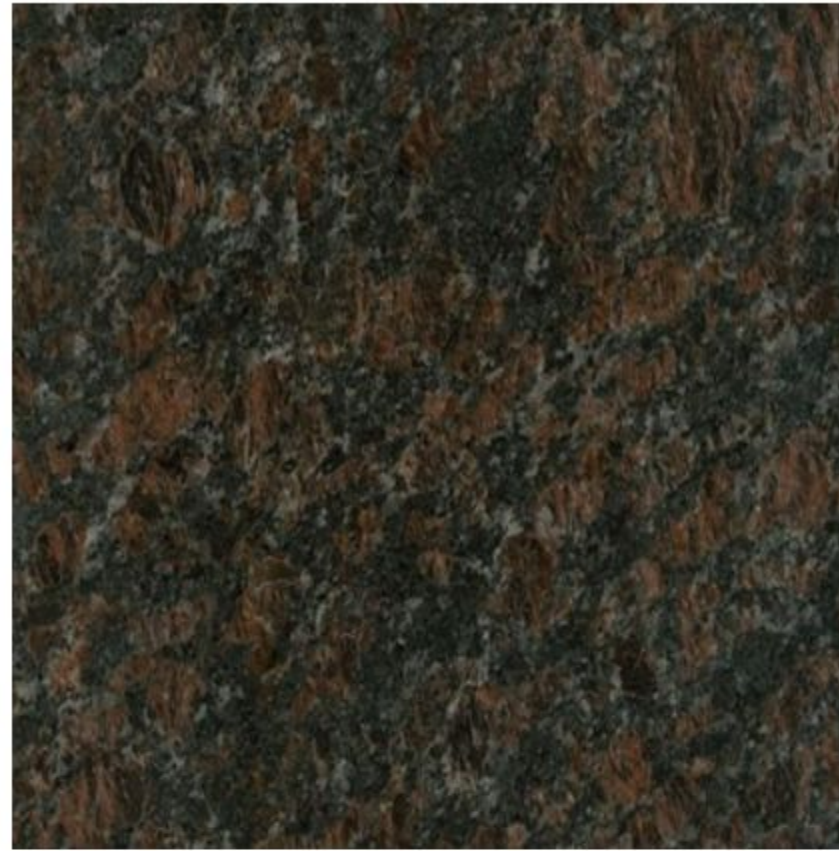
HGL Granite

Granite Countertop

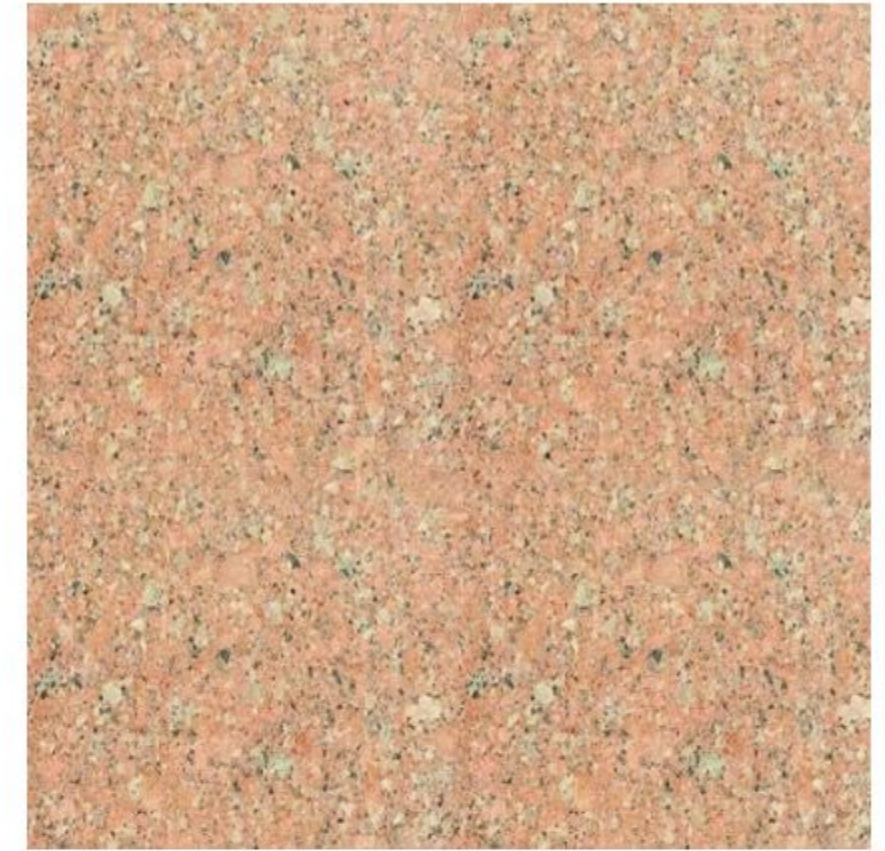
Standard Colors **+\$0**



Finnish Brown Granite



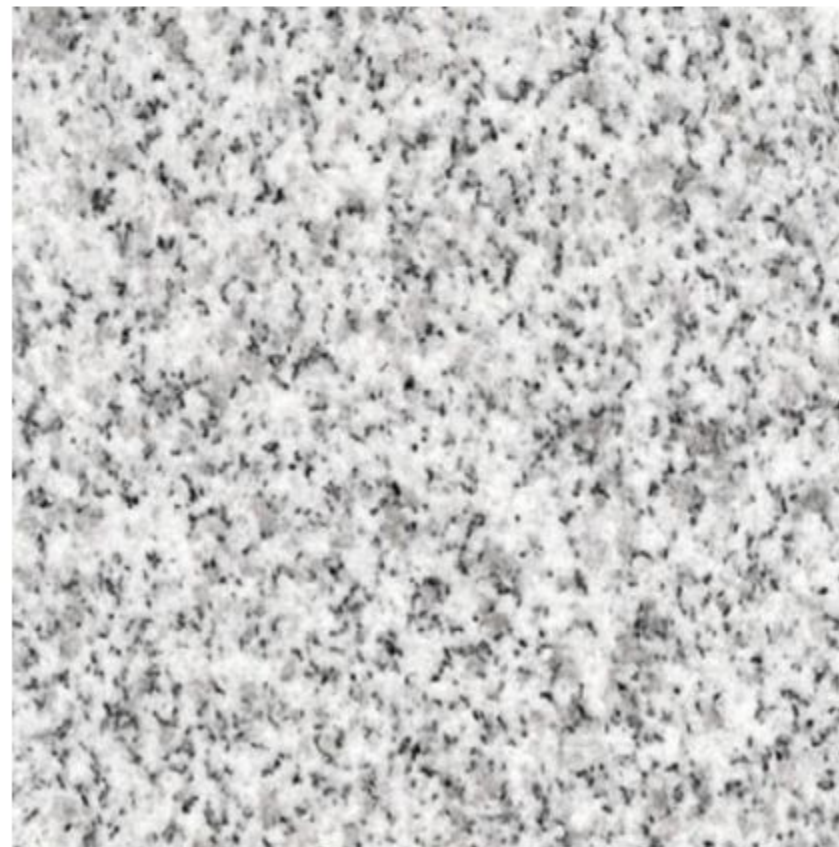
British Brown Granite



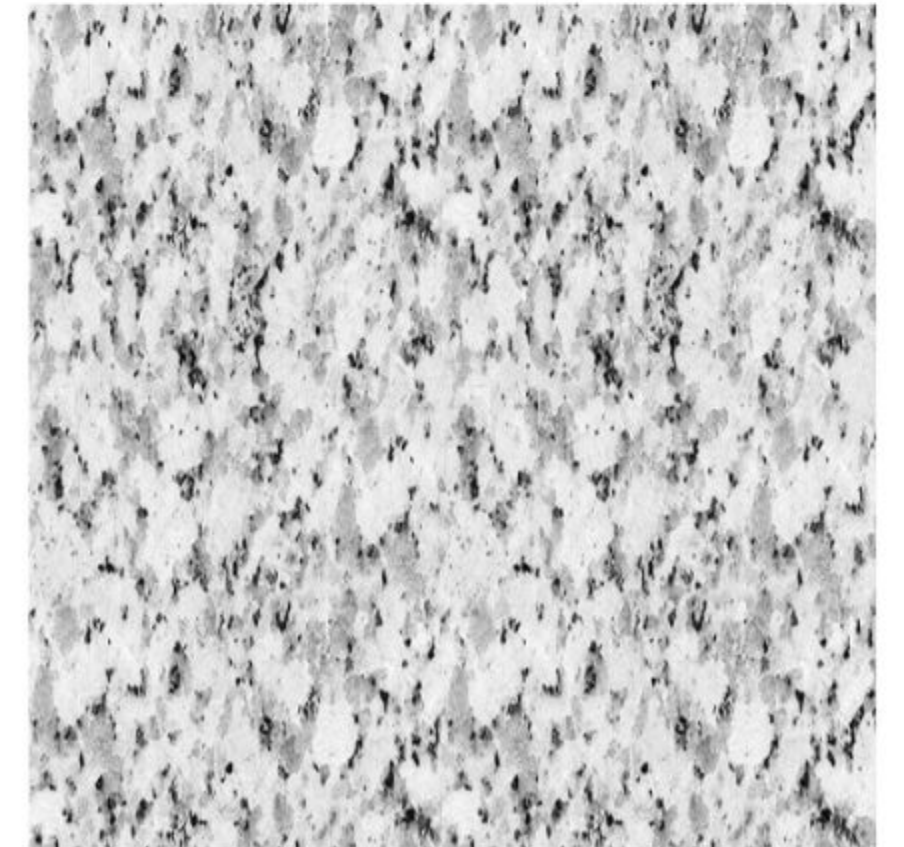
HBD Granite



Finnish Red Granite



BD White Granite



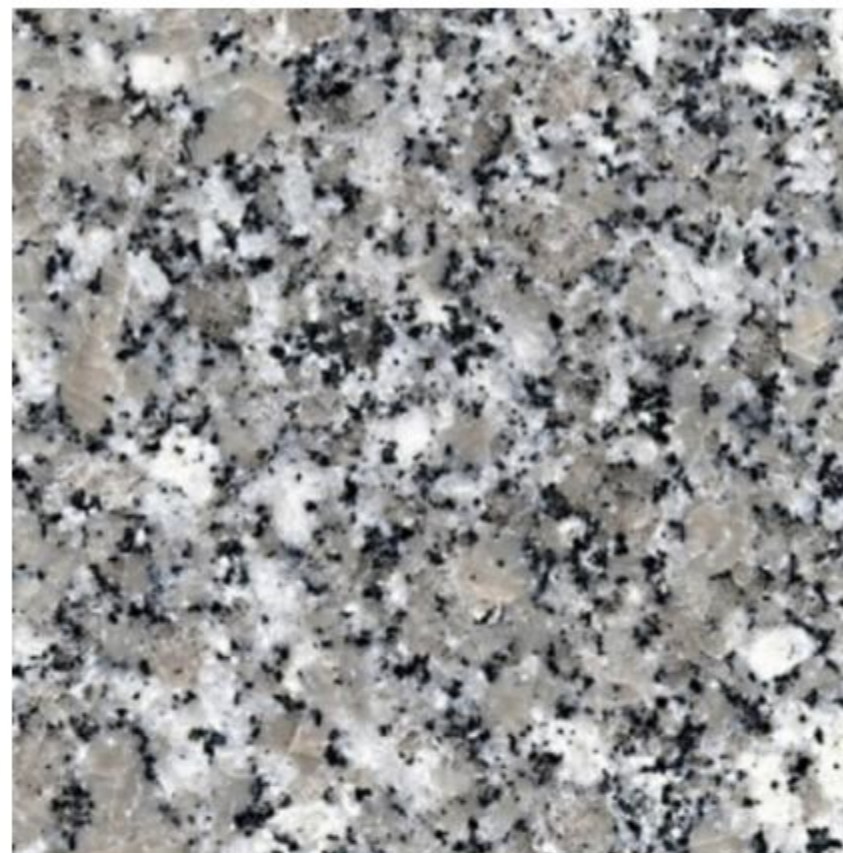
Indian White Granite

Granite Countertop

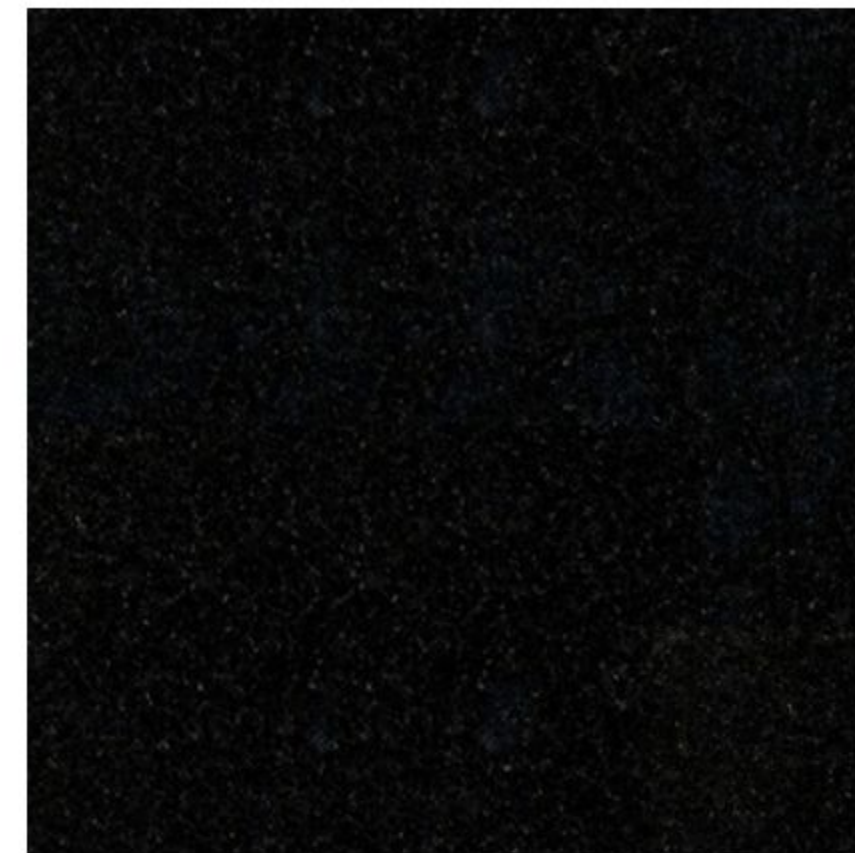
Standard Colors **+\$0**



PR White Granite



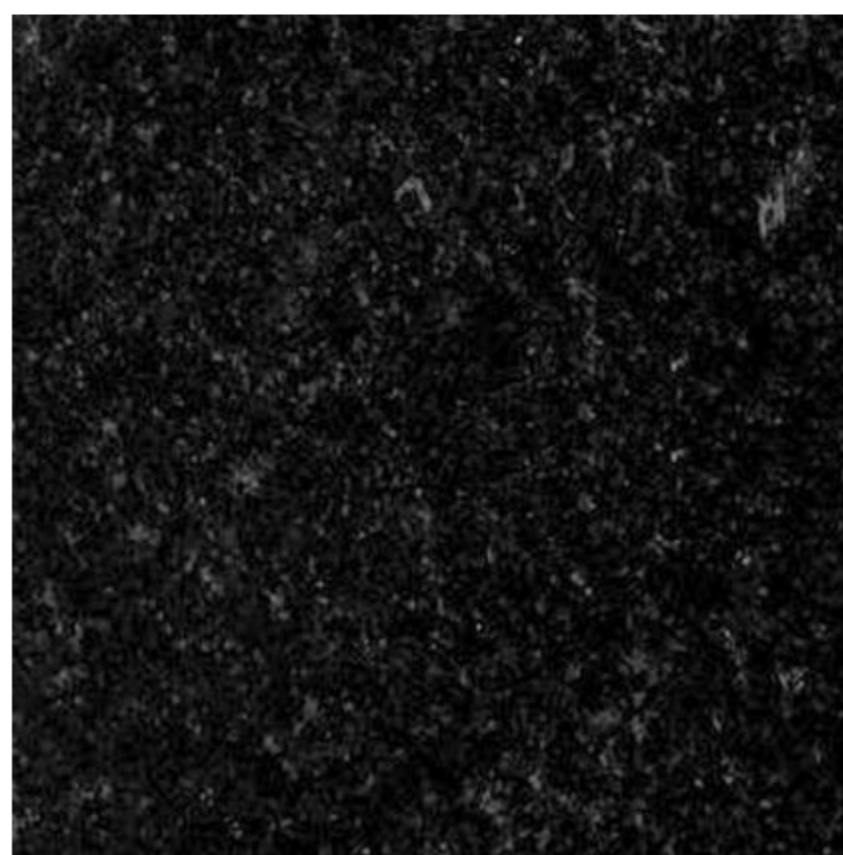
White Stream Granite Stone



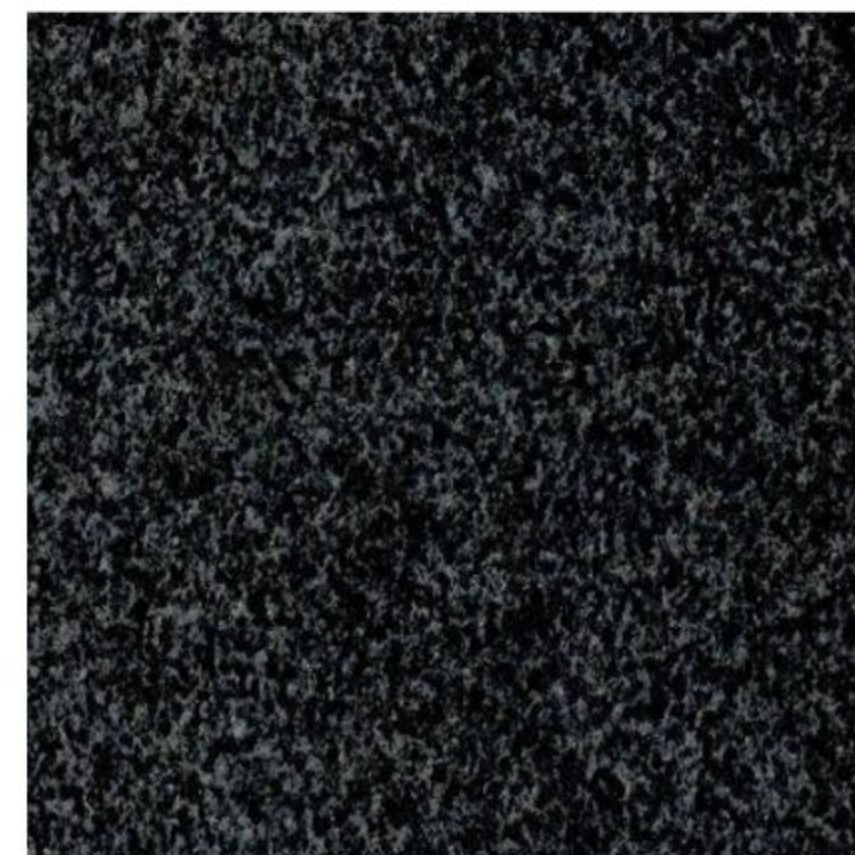
Green Kim Sa Stone



PY Black Granite



Hue Black Granite



Black Mouse Hair

Granite Countertop

Standard Colors **+\$0**

Studio+ Modular Home

Marble Countertop Features & Benefits

Timeless Elegance

Since marble was created through a natural process, each piece is unique in appearance. The wide range of hues and colors found in marble are determined by the area of origin.

Durability

Marble's strength makes it naturally more resistant to cracking and scratching than many other stone materials.

Easy to Clean

Whether you are simply cleaning down the whole countertop or working out a stain, marble cleaning is easy.

Heat Resistance

Bakers prefer marble because it stays cool, many people do not know marble is also heat resistant. A marble countertop will not burn, melt, or catch fire.

Longevity

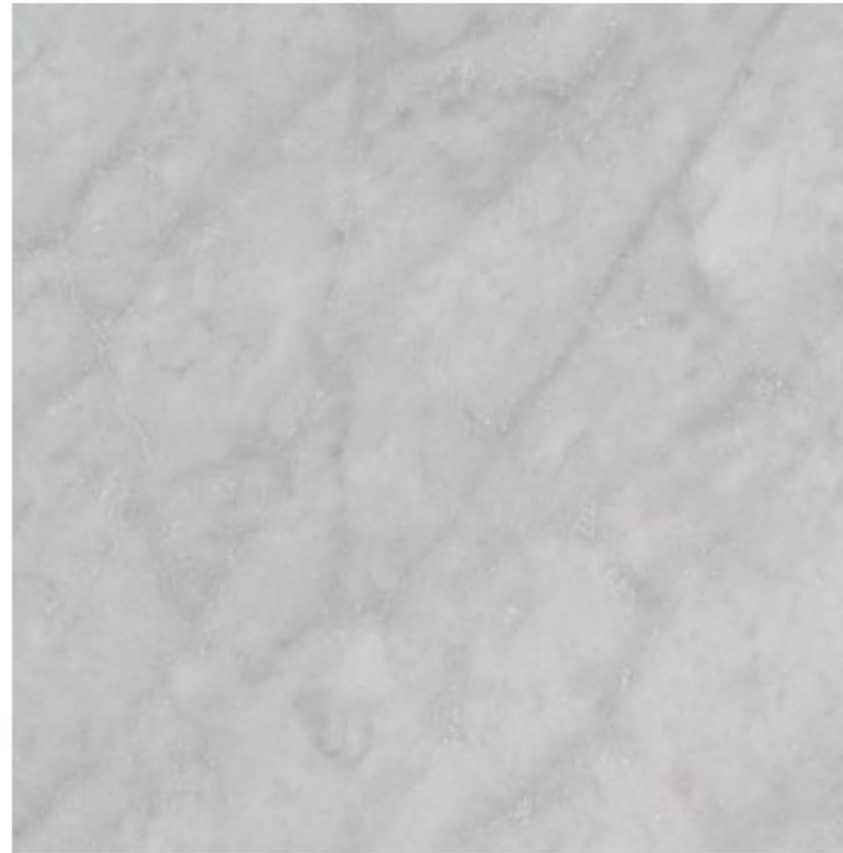
Marble has been used as a building material for a very long time, so its ability to withstand the test of time is well documented.

Sealed and strong

Protected by a layer of Marble Sealer that produces an ever-polished look, water and oil shield, and prolongs life-cycle.



White Volakas



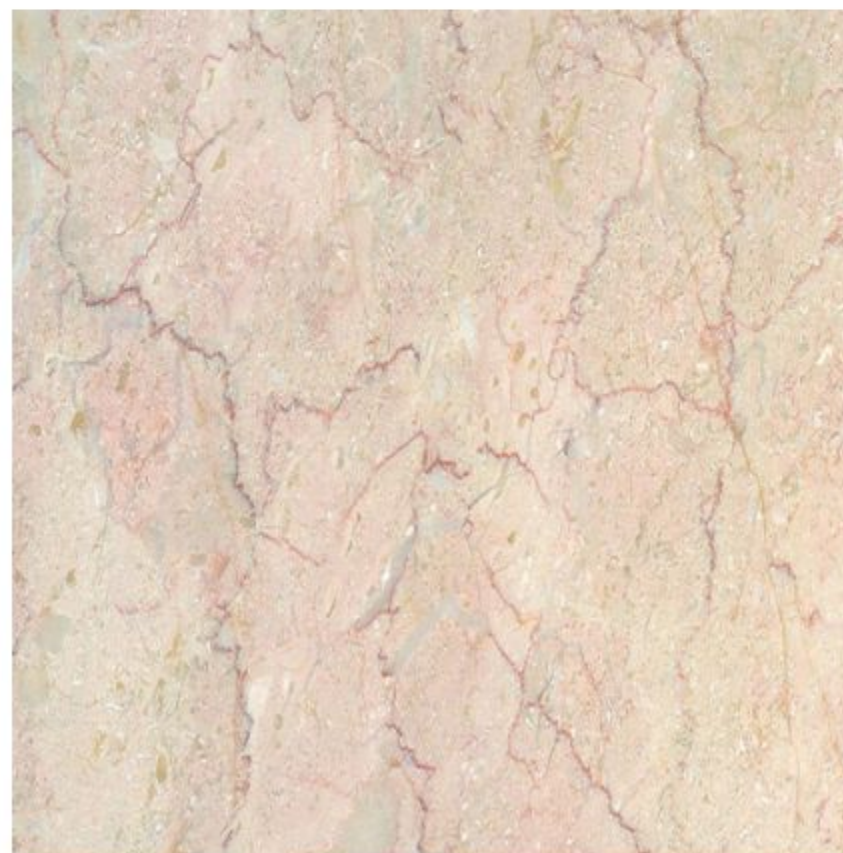
Carrara White Marble



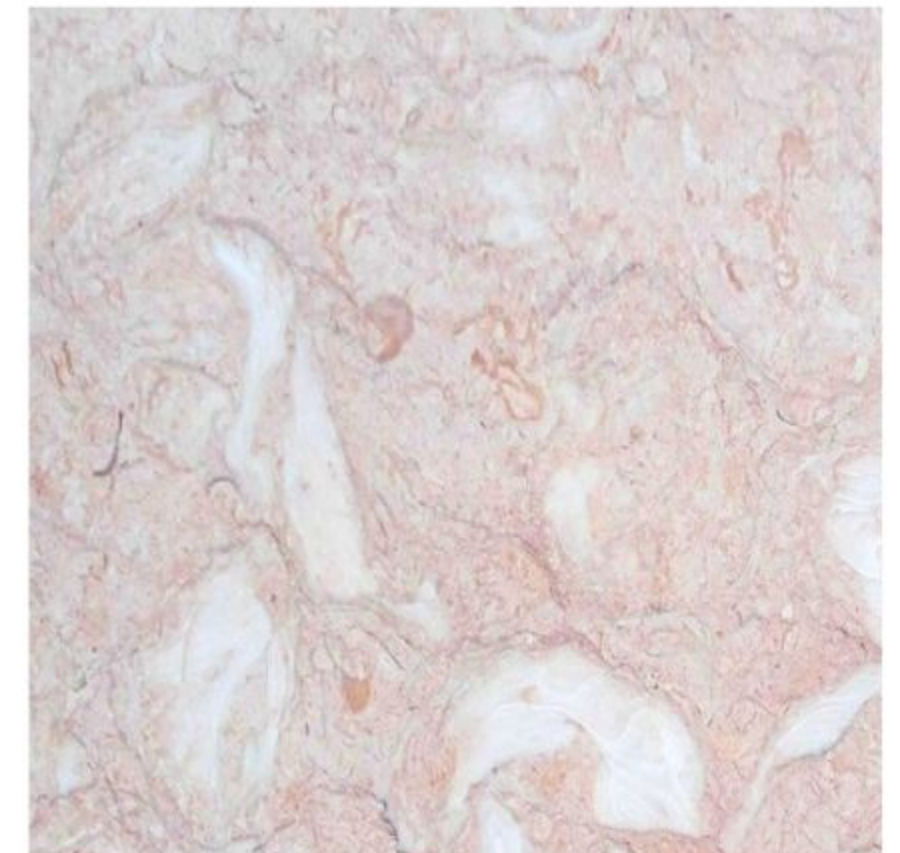
White Polaris



White Marble Salt



Cream Rose



HS Marble

Marble Countertop

Upgrade

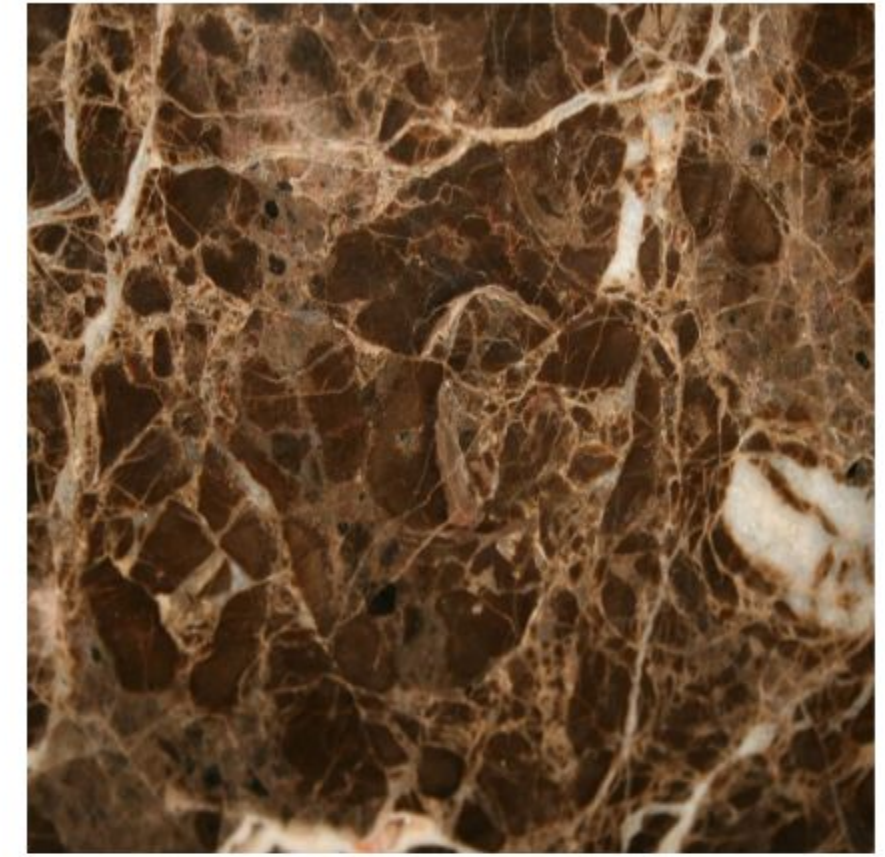
+\$300



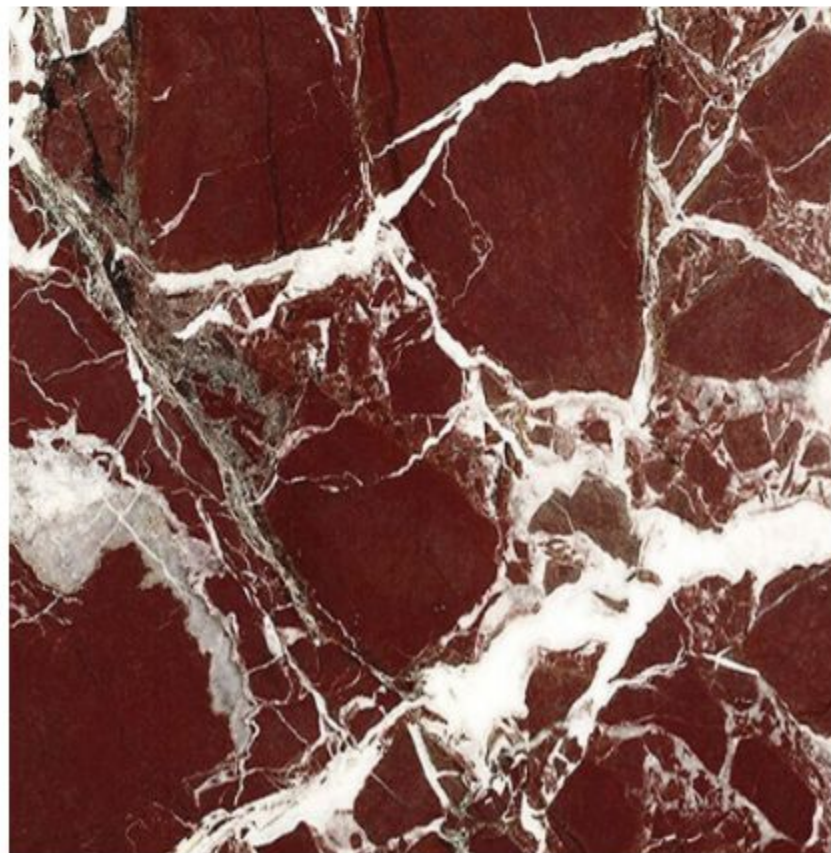
Gray Wood Marble Marble



Brown Marble Daino



Dark Spanish Marble



Blood Red Marble

Marble Countertop

Upgrade

+\$300

The background of the image is a close-up, slightly angled view of a surface with a repeating diamond or grid pattern. The pattern consists of light-colored lines forming a grid of squares, with the squares themselves filled with a gradient of colors ranging from light beige to a muted teal. In the lower-left quadrant, a black microscope is positioned diagonally. A white rectangular box with a thin border is superimposed over the center of the image, containing the text "Optional Upgrade Components" in a white, sans-serif font.

Optional Upgrade Components



Studio+ Modular Home

Smart Door Lock

Our Smart lock is designed to be "Real Keyless". You are free to use fingerprint, code, key or smartphone to unlock. You can just knock on your phone to open the door, even when it's in your pocket.

Studio+ Modular Home

Smart Lock Features & Benefits





Aged Bronze

Add **+\$250**



Satin Nickel

Add **+\$250**



Studio+ Modular Home

Wireless & Smart Doorbell Systems

Our **wireless doorbell system** includes a chime box receiver and a doorbell transmitter. The transmitter attached to the outside of the home, sends a radio signal to the inside of the home where the receiver is located. This happens when someone pushes the transmitter button.

Our **smart doorbell system** is an internet-connected doorbell that notifies the smartphone or other electronic devices when a guest arrives to the entrance of the door. It activates when the guest presses the button of the doorbell, or alternatively, when the doorbell senses a guest with its built-in motion sensors. The smart door bell allows you to use your smartphone to watch and talk with the guest by using the doorbell's built-in high-definition camera and microphone.

Studio+ Modular Home

Wireless Doorbell Features & Benefits

High Performance

Ultra-low power consumption; uses a CR2032 lithium battery that boasts 3 year maximum lifespan; IP55 dust-proof and waterproof; working temperature ranges from -4 °F-140 °F; withstands various harsh weather conditions

Many Ring Tones

40 mm stereo speaker delivers rich and crisp sound; easily choose from 52 melodies; 5 adjustable volume levels, with a maximum volume of 115 dB; enjoy pleasant melodies whenever someone rings at your door

Weatherproof

High waterproof rating of IP55. Even heavy rain will not interrupt the operation of the robust transmitter while stationed outside

Long Range

2 plug-in receivers included; will not interfere with other equipment in your home or those of your neighbors; ensures that you will never miss any visitors, even if you are several rooms away

Ringtone Memory

Preserves your last set melody and volume level after a power outage; no need to reset to your previous settings; convenient and easy to use design for a better user experience

Lifetime Warranty

Simple as that, this doorbell will last you the lifetime of your home or we'll replace it.

Studio+ Modular Home

Smart Doorbell Features & Benefits

1080p Video w/ LiveView

Monitor your property in HD video, and check-in on your home at anytime with Live View on-demand video and audio.

Two-way Talk

Hear and speak to visitors from your mobile device using the built-in microphone and speakers with noise cancellation.

Recordable

Ring Protect Plus lets you record, save and share all the videos captured by unlimited Ring Doorbells and Cameras at your home.

Motion Sensors

Can detect motion as far as 30 feet away. Once motion is detected, all users associated with the Ring will instantly receive a push notification informing them of the activity.

App Connected

Lets you see, hear and speak to visitors from your phone, tablet and PC. Also Works with Alexa to illuminate and send announcements to Echo devices.

Customizable & Easy

Easy removable battery charging without moving the device, swappable faceplates, and adjustable motion sensor sensitivity.



Wireless Standard Doorbell

Add **+\$50**



Ring 2 Smart Doorbell

Add **+\$200**



Studio+ Modular Home

LED Dimmers

Our dimmers make it easy for you to adjust the brightness level of your lights and to open up a wide range of lighting moods. This provides more flexible lighting options, as well as helps save energy and extends the life of your lights.

SIMPLE DESIGN

An easy-to-operate rocker switch to turn lights on/off or to pre-selected level.

ENERGY EFFICIENCY

You can decrease the amount of light you use which could lower energy bills.



CREATE AMBIANCE

You can set the mood for any room in your Studio+ Modular Home.

KINDER TO EYES

Enjoy a more uniform distribution of light which is kinder to the eyes hence less eye strain common with ordinary lighting.



4 LED Dimmers

Add **+\$75**



2 LED Dimmers

Add **+\$40**

Studio+ Modular Home

Security Lighting

Improve safety and your ability to monitor the property at night by adding security lights. We have a selection of security lighting packages that we install on your home and are solar powered for an easy set-and-forget lighting setup.



Studio+ Modular Home

Security Lighting Features & Benefits

Solar Powered

Featuring industry standard SunPower solar panels, conversion rates are more than 22%, which saves energy and is more eco-friendly.

Weatherproof

Features the IP66 waterproofing standard that ensures proper functioning if unit is immersed in 0.5m deep water for more than 15 min. This standard also ensures heat resistance and frost resistance.

Wide Lighting Angle

30 densely distributed LED lights with 6 lights respectively set up on both sides create wide lighting range and super brightness.

Motion Sensor

PIR Motion Sensor can detect up to 26FT at 120°, which sensing range and sensitivity are both 20% higher than others. Even your little pets, like dogs, cats can active outdoor solar lights sensor easily.



**30 LED
Lighting Setup**

Add **+\$75**



**66 LED
Lighting Setup**

Add **+\$100**

A photograph of a doorway leading to a brick wall. The doorway is framed by a dark wooden door frame. The brick wall is made of dark, rectangular bricks with light-colored mortar. The floor in the foreground is made of light-colored wooden planks. A black rectangular box is overlaid in the center of the image, containing the text "Thank You" in white.

Thank You